

# SUPREMA<sup>®</sup>

Premium Interior Paint for Superior Performance



THE #1 CHOICE OF  
PAINTING PROFESSIONALS<sup>®</sup>

# SUPREMA® Premium Interior Paint for Superior Performance

**SUPREMA®** is our premium interior water-based paint that is ultra-low VOC (volatile organic compounds). It combines exceptional hide with superior durability, washability and block resistance.

All **SUPREMA®** products apply easily and dry to a smooth finish.

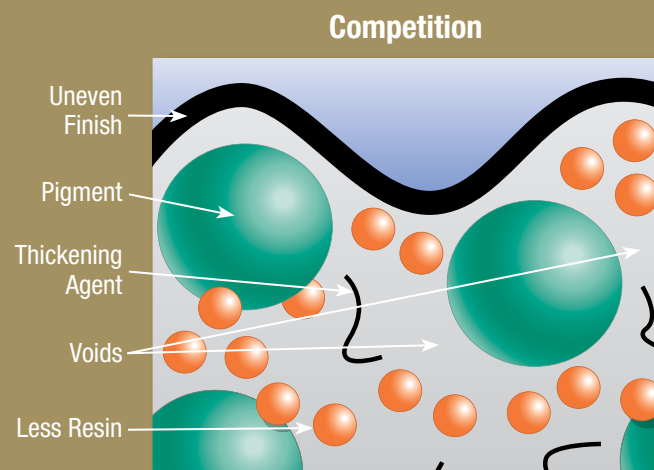
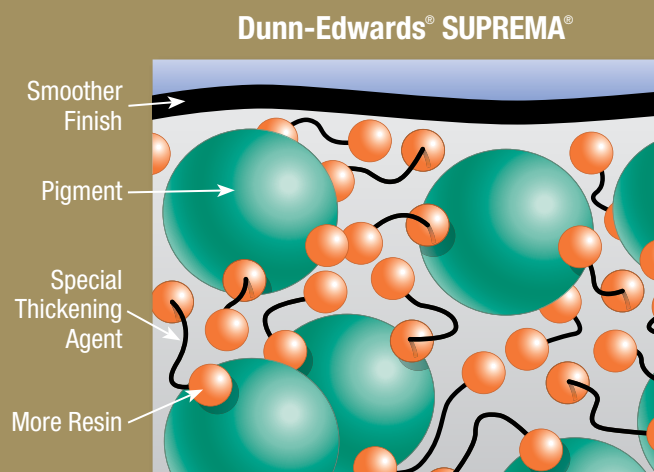


## Why SUPREMA® is the best performing interior paint

**SUPREMA®** is a more durable paint and is richer in resin than the competition. The high quality resins used in our formula provide better scrub resistance. This means that **SUPREMA®** can withstand repeated scrubbing.

**SUPREMA®** provides better block resistance because our naturally tougher resin particles create a harder film.

**SUPREMA®** has excellent flow and leveling because it uses a special thickening agent that interacts better with the resin particles to allow the paint film to flow better. This ensures a smooth, even finish every time.

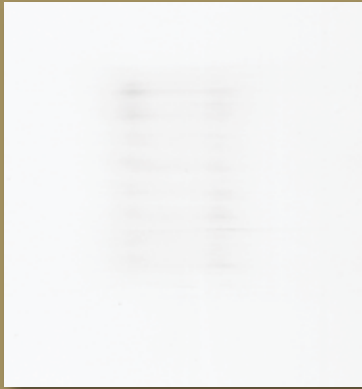


# See the SUPREMA<sup>®</sup> difference for yourself

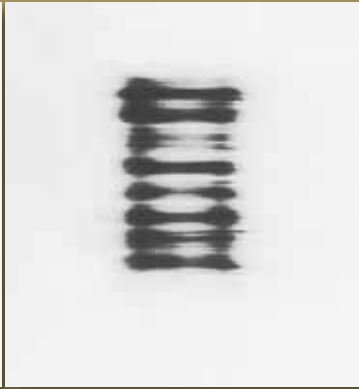
## Scrub Test

SUPREMA<sup>®</sup> outperforms other brands in durability after repeated scrub cycles.

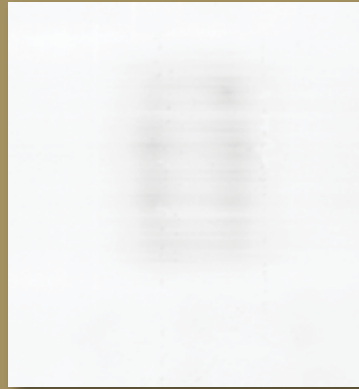
SUPREMA<sup>®</sup>  
Interior Flat Paint  
250 Cycles



National  
Brand  
250 Cycles



SUPREMA<sup>®</sup>  
Interior Low Sheen Paint  
600 Cycles



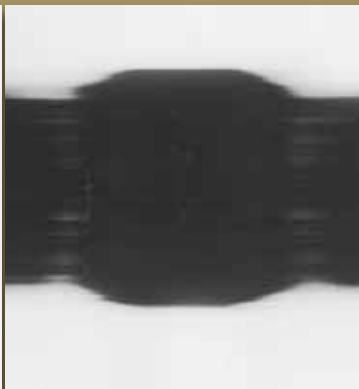
National  
Brand  
600 Cycles



SUPREMA<sup>®</sup>  
Interior Velvet Paint  
800 Cycles



Regional  
Brand  
800 Cycles



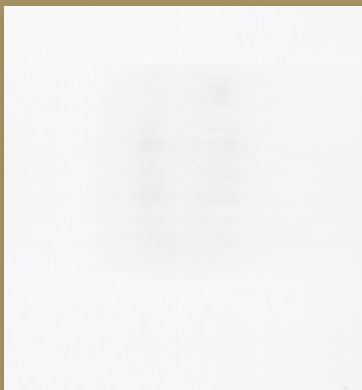
SUPREMA<sup>®</sup>  
Interior Semi-Gloss Paint  
400 Cycles



National  
Brand  
400 Cycles



SUPREMA<sup>®</sup>  
Interior Eggshell Paint  
200 Cycles



Regional  
Brand  
200 Cycles



Test Method: Paints are applied to black charts. After drying for seven days, the charts are placed in an abrasion testing machine and stopped at the indicated cycle. Complete film deterioration occurs when a full line of black background is exposed.

## Block Test

**SUPREMA®** has better block resistance compared to competitive products of the same gloss level. Excellent block resistance helps prevent a door from sticking to the jamb or a window from sticking to its frame after they are painted. This is an important performance feature to look for in low sheen and semi-gloss paints.

SUPREMA®  
Interior Low Sheen Paint



Regional  
Brand



SUPREMA®  
Interior Semi-Gloss Paint



National  
Brand



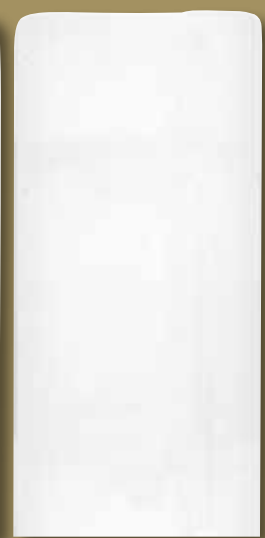
## Flow & Leveling Test

**SUPREMA®** has better flow and leveling compared to competitive products of the same gloss level. Good flow and leveling ensures that the paint dries to a smooth, uniform finish without any unsightly marks or lines.

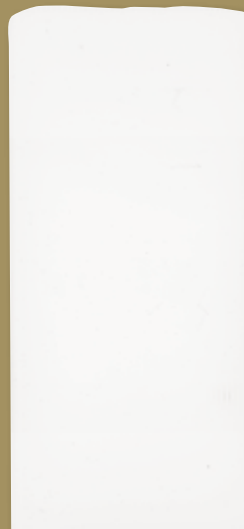
SUPREMA®  
Interior Low Sheen Paint



Regional  
Brand



SUPREMA®  
Interior Semi-Gloss Paint



National  
Brand



Test Method: Paints are applied to black and white charts and allowed to dry for 24 hours. The charts are then cut and folded over each other. A weight is then placed on them to force the painted surfaces together. After 24 hours, the face-to-face charts are pulled apart to see if the dried paint stuck together.

Test Method: Paints are applied to black and white charts using a special blade. After drying horizontally for 24 hours, the charts are examined to determine the smoothness of the finish against a standard Leneta scale from 1 = Poor (Not Smooth) to 10 = Excellent (Completely Smooth).

These are high-resolution scans of the actual test results. The actual test results may be viewed by appointment at Dunn-Edwards corporate office.

# Recommended Primers

It is always recommended that **SUPREMA®** be used over properly prepared and primed surfaces. Below are our best primers for use on each type of surface.

Drywall	Recommended Primer
Textured	<b>VINYLASTIC® Premium</b> (VNPR00)
Untextured	<b>VINYLASTIC® Premium</b> (VNPR00)
Skim-Coated	<b>VINYLASTIC® Premium</b> (VNPR00)
Masonry	
Plaster, Tilt-Up Concrete, Poured-In-Place, Brick	<b>EFF-STOP® Premium</b> (ESPR00)
Concrete Block	<b>Medium BLOCFIL™ Premium</b> (MBPR00) or <b>Smooth BLOCFIL™ Premium</b> (SBPR00)
Smooth Trowel	<b>SUPER-LOC® Premium</b> (SLPRA00/SLPRB00) or <b>ENDURASEAL®</b> (W360)
Wood	
Trims, Doors	<b>INTER-KOTE® Premium</b> (IKPR00) or <b>ULTRA-GRIP® Premium</b> (UGPR00)
Synthetic Wood	
Masonite	<b>INTER-KOTE® Premium</b> (IKPR00) or <b>ULTRA-GRIP® Premium</b> (UGPR00)
Hardboard	<b>INTER-KOTE® Premium</b> (IKPR00) or <b>ULTRA-GRIP® Premium</b> (UGPR00)
Metal	
Ferrous	<b>BLOC-RUST® Premium</b> (BRPR00-1), <b>GALV-ALUM™ Premium</b> (GAPR00) or <b>ULTRA-GRIP® Premium</b> (UGPR00)
Non-Ferrous	<b>GALV-ALUM™ Premium</b> (GAPR00) or <b>ULTRA-GRIP® Premium</b> (UGPR00)
Damaged Substrates	
Water- or Smoke-Damaged Substrates	<b>BLOCK-IT™ Premium</b> (BIPR00)

# A green legacy, a greener future

Dunn-Edwards® has a green legacy that makes us proud and inspires us to do more.

We are firmly dedicated to the green principle of eco-efficiency, which we define as the ability to satisfy human needs in ways that minimize adverse impacts on energy and material resources, environmental quality, and human health and safety. **SUPREMA®** is yet another example of this commitment.

**SUPREMA® is available in a full range of finishes and colors.**



Interior  
Flat Paint  
SPMA10



Interior  
Velvet Paint  
SPMA20



Interior  
Eggshell Paint  
SPMA30



Interior  
Low Sheen Paint  
SPMA40



Interior  
Semi-Gloss Paint  
SPMA50

DUNN-EDWARDS CORPORATION  
4885 East 52<sup>ND</sup> Place  
Los Angeles, California 90058-5507  
(888) DE PAINT | [dunnedwards.com](http://dunnedwards.com)



Like us on Facebook  
[facebook.com/dunnedwards](http://facebook.com/dunnedwards)



THE #1 CHOICE OF  
PAINTING PROFESSIONALS®



Mixed Sources  
Product group from well-managed  
forests, controlled sources and  
recycled wood or fiber

Cert no. SCS-COC-001825  
[www.fsc.org](http://www.fsc.org)  
© 1996 Forest Stewardship Council

©2011 Dunn-Edwards Corporation. All rights reserved. Dunn-Edwards®, The #1 Choice of Painting Professionals®, (888) DEPAINT®, SUPREMA®, VINYLASTIC®, EFF-STOP®, BLOCFIL™, SUPER-LOC®, ENDURASEAL®, INTER-KOTE®, ULTRA-GRIP®, BLOC-RUST®, WB SYN-LUSTRO® and BLOCK-IT™ are registered and/or trademarks of the Dunn-Edwards Corporation. GALV-ALUM™ is a trademark of BIEC International, Inc. used under license by Dunn-Edwards Corporation. ESL1000 · 25M 6/11