



Advanced Acrylic

EPOXY-SEAL™

CONCRETE & GARAGE FLOOR PAINT

PRODUCT DATA



VOCs Less than 50 grams/liter

New SEAL-KRETE® EPOXY-SEAL® Clean Air, Low VOC Formula is a ready-to-use, acrylic-epoxy blend formulated to resist hot tire pick-up, oil, grease and gasoline. This epoxy-fortified formula dries to a durable, UV-resistant, satin finish that resists scuffing, peeling, blistering and fading. EPOXY-SEAL is easy to maintain, making it ideal for both interior and exterior high-traffic areas including garage floors, driveways, shop floors, basements, pool decks, walkways, patios, porches and more. **Important:** Read all directions thoroughly. Always wear gloves and eye protection.

SURFACE PREP

Note: Proper surface prep is critical to product performance. The surface should be clean, dry, sound and free of dirt, dust, oil, wax and grease. You may need an oil stain remover such as SEAL-KRETE OSR® to lift stubborn oil stains.

BARE CONCRETE: Concrete must have cured for a minimum of 30 days before application. Etch the surface with SEAL-KRETE Concrete Clean & Etch to allow for proper penetration and adhesion. Etching is especially important for smooth-troweled concrete surfaces (like garage and basement floors) and is also recommended for rough-finished surfaces. After etching, rinse the surface thoroughly and let dry. For best adhesion results, apply one thin coat of SEAL-KRETE Lock-Down Epoxy Bonding Floor Primer.

PREVIOUSLY STAINED OR PAINTED CONCRETE: Remove loose or peeling paint and degloss surface by sanding (150-200 grit paper). * Follow with a general cleaning. Rinse thoroughly and let dry. Then coat the surface with SEAL-KRETE Lock-Down Epoxy Bonding Floor Primer.

APPLICATION

Use only when air and surface temperatures are 55-90°F and are not expected to fall below 55°F for 24 hours before and after application. If more than one gallon is used, intermix all product to ensure color uniformity; stir well. Apply a very thin coat with a roller* or nylon-polyester brush. Wait 4-6 hours. ** Apply second coat in a direction perpendicular to the first.

* Use 1/4" nap for smooth-troweled surface, 3/8" nap for broom-finished surface, 1/2" nap for rough or textured surface.

** Additional dry time is needed in lower temperatures or when relative humidity is more than 50%.

COVERAGE: 300 – 500 sq.ft. per gallon, depending on surface porosity.

DRY TIME: Dry to the touch in 2 hours (77°F, 50% RH). Dry to light foot traffic in 24 hours, heavy foot traffic in 72 hours. **Allow a minimum of 5 days before subjecting to automotive traffic.** Premature traffic could cause paint to lift.

*Sanding or removing paint containing lead may be hazardous. For information contact the National Lead Information Center at 1-800-424-LEAD or www.epa.gov/lead.

CLEAN-UP & STORAGE: Clean tools with soap and water. Contact your household refuse collection service for disposal of empty containers and unused paint. **Important:** Wait 30 days before rinsing or cleaning surface. To avoid premature paint failure, do not use abrasive cleaners or pressure-washer on surface.

LIMITATIONS: Not recommended for wood, metal, glazed surfaces or areas subject to standing water or hydrostatic pressure. Areas receiving heavy tire traffic should be coated with an approved SEAL-KRETE clear sealer. Do not use if rain is expected within 24 hours.

WARNING! IRRITANT! CONTAINS EPOXY RESIN AND ACRYLATES.

CAUTION: KEEP OUT OF REACH OF CHILDREN. DO NOT TAKE INTERNALLY.

USE WITH ADEQUATE VENTILATION. To avoid breathing vapors and spray mist, open windows and doors or use other means to ensure fresh air entry during application and drying. If you experience eye watering, headache or dizziness, increase fresh air and use a properly fitted respirator (NIOSH-approved for organic vapor with P Series particulate prefilter). Obtain professional advice before using. A dust mask does not provide protection against vapors. Avoid contact with eyes and skin. Wash thoroughly after handling. Close container after each use.

FIRST AID: If you experience difficulty breathing, leave the area to obtain fresh air. If continued difficulty occurs, get medical attention immediately. In case of eye contact, flush immediately with plenty of water for 15 minutes and get medical attention. For skin contact, wash thoroughly with soap and water. If swallowed, get medical attention immediately.

WARRANTY: Manufacturer/seller makes no warranty of any kind except that this product is free from defect and is of merchantable quality. Buyer remedy for breach of warranty is limited to replacement of product or refund of purchase price. Convenience Products will not be responsible for labor or the cost of labor for removal or application of any product.

TECHNICAL SUPPORT: For more information on surface prep or application guidelines, or to obtain a Material Safety Data Sheet, call 1-800-323-7357, M-F (8:00 am - 5:00 pm EST) or visit our website at www.seal-krete.com.



Product	No.	Size	UPC Code	Case Bar Code	Case Size (L x W x H)	Case Size (cubic ft / lbs)	Case Qty	Pallet Qty
EPOXY-SEAL Low VOC White Base	960001	1 gallon	0 15944 96001 3	9 00 15944 96001 6	14 x 14 x 8	.91 / 42	4	45 cases
EPOXY-SEAL Low VOC Deep Base	970001	1 gallon	0 15944 97001 2	9 00 15944 97001 5	14 x 14 x 8	.91 / 41	4	45 cases
EPOXY-SEAL Low VOC Armor Gray	961001	1 gallon	0 15944 96101 0	9 00 15944 96101 7	14 x 14 x 8	.91 / 44	4	45 cases
EPOXY-SEAL Low VOC Slate Gray	962001	1 gallon	0 15944 96201 7	9 00 15944 96201 4	14 x 14 x 8	.91 / 44	4	45 cases



**READY-TO-USE • RESISTS OIL, CHEMICALS, HOT TIRE PICKUP
HI-HIDE • INTERIOR / EXTERIOR • SOAP & WATER CLEAN-UP**



Advanced Acrylic

EPOXY-SEAL™

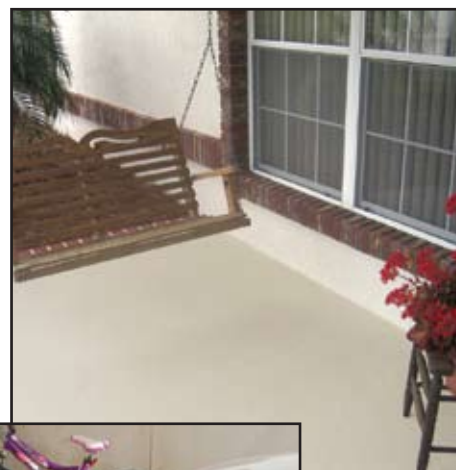
CONCRETE & GARAGE FLOOR PAINT

TECHNICAL INFORMATION:

- Finish: Premium satin
- Colors: 18 available
- Colorant Limits: White Base 5 oz., Deep Base 8 oz.
- Volume Solids: 39.00 ± 1%
- Weight Solids: 44.00 ± 1%
- VOC (EPA method 24): < 50 g/L
- Odor: Very low
- Recommended spread rate (per coat):
 - Wet mils: 3.2 - 5.3
 - Dry mils: 1.3 - 2.1
- Coverage: 300-500 sq ft/gal
- Shelf Life: 2 yrs (unopened container stored at 77°F)
- Flash Point: > 200°F closed cup method
- Dry Time (4 mils wet film thickness, 50%RH):

**3 TIMES
THE DURABILITY
OF PORCH & FLOOR
PAINT**

UV-resistant. Very low odor. Hi-hide. Great for concrete garage floors, shop floors, basements, driveways, porches, patios, walkways, pool decks and more!



	55°F	77°F	90°F
Dry to touch:	3 hrs	2 hrs	1 hr
Recoat:	6 hrs	4 hrs	2 hrs
Light foot traffic:	36 hrs	24 hrs	12 hrs
Heavy foot traffic:	5 days	72 hrs	36 hrs
Vehicular traffic:	10 days	5 days	5 days

- ASTM TESTING (on smooth, bare, etched concrete – 2 coats, 4 mils dry film thickness):
 - ASTM D-4541 (adhesion, 500 psi): 100% concrete failure
 - ASTM D-4060 (abrasion, CS-17 wheel, 1000 cycles): 111 mg loss
 - ASTM D-2794 (impact resistance): 30 inch lbs.
 - ASTM D-522 (flexibility, 180 bend, 1/8" mandrel): Pass
 - ASTM D-4585 (humidity resistance): 500 hr. rating of 10 for blistering
 - ASTM D-3363 (pencil hardness): 2B
 - ASTM D-2486 (scrub resistance): Passes 1000 cycles
 - ASTM C-1028-96 (slip resistance): .60 minimum static coefficient of friction rating



Convenience Products
 306 Gandy Rd., Auburndale, FL 33823 USA
 Questions or comments? e-mail: tech@seal-krete.com
 or call 1-800-323-7357

How to treat concrete®

www.seal-krete.com